

Flush Contacts 5 Terminal

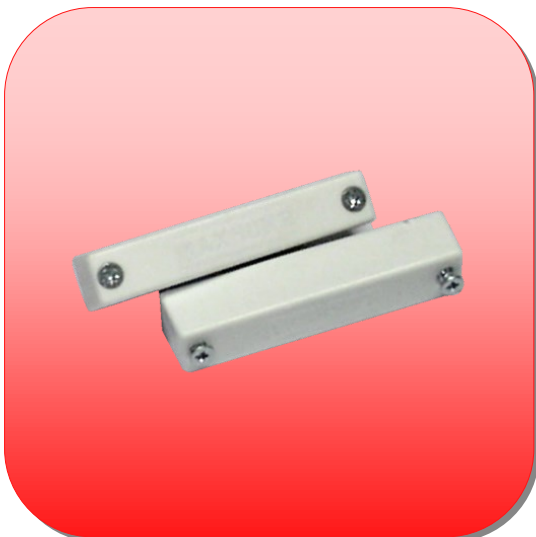
Order Code

LY97-001-74	White
LY97-013-80	Brown

Features; 5-Terminal Flush Single Reed Contact (Quickfit), Colour: White / Brown, Environmental Class 2, Operating Gap: 14mm (approx), Dimensions: 20mm diameter, Terminals : 5- Screw.

Technical Specifications

Specification	Grade 2 Class II
	5 Terminal Flush Contact Single Reed
Operating Gap	14mm (approx)
Dimensions	20mm diameter
Materials	High Impact Polystyrene
Magnet	Ferrite or Alnico V
Contact Material	Rhodium
Voltage Range	1 – 100v DC, 125v AC Max
Switching Current	500mA Max DC, 500mA Max AC
Temperature Range	-40°C to +50°C

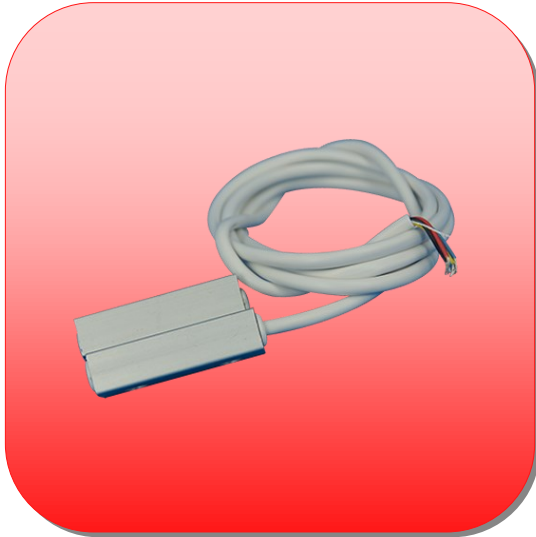
Surface Contacts 5 Terminal

Order Code

LY97-003-76	White
LY97-002-75	Brown

Features: 5-Terminal Flush Single Reed Surface Contact, Colour: White / Brown, Environmental Class 2, Operating Gap: 20mm (approx), Dimensions: 67mm x 14mm x 13mm, Terminals : 5- Screw.

Technical Specifications

Specification	Grade 1 Class II
	Single Reed
Operating Gap	20mm (approx)
Dimensions	67mm x 14mm x 13mm
Materials	High Impact Polystyrene, Stainless Steel Plate
Magnet	Ferrite or Alnico V
Contact Material	Rhodium
Voltage Range	1 – 100v DC, 125v AC Max
Switching Current	500mA Max DC, 500mA Max AC
Temperature Range	-40°C to +50°C

Surface Contacts 4 Core (Aluminium)

Order Code
LY97-018-83

Features; Mini-Surface Contact Potted, 4-Core Single Reed Aluminium, Colour: Silver Aluminium, Environmental Class 3, Dimensions: 40mm x 14mm x 10mm, Terminals: 4-Core Cable, Cable Length: 1m.

Technical Specifications

Specification	Grade 2 Class III
	Mini Surface Contact, 4 Core
	Single Reed
Operating Gap	16mm (approx)
Dimensions	40mm x 14mm x 10mm
Materials	Anodised AA15 Aluminium
Magnet	Ferrite or Alnico V
Contact Material	Rhodium
Voltage Range	1 – 100v DC, 125v AC Max
Switching Current	500mA Max DC, 500mA Max AC
Temperature Range	-40°C to +50°C

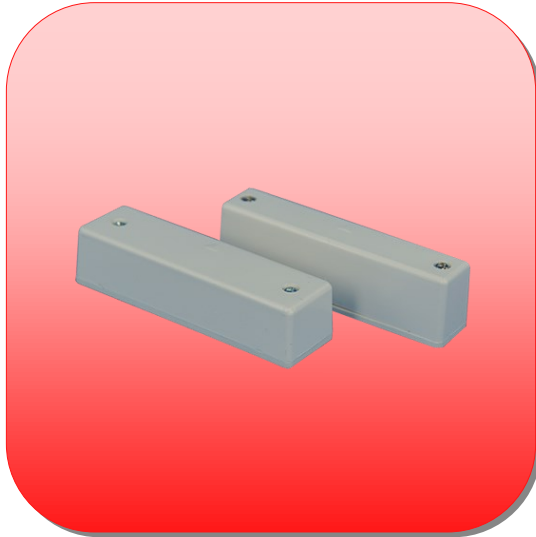
Roller Shutter Contacts (Aluminium)

Order Code
LY97-006-79

Features: Roller Shutter Single Reed, Cable protected by 18" (457mm) armoured sleeving, Dimensions: 150mm x 40mm x 15mm, Operating Gap: 50mm, IP67, Material: Aluminium.

Technical Specifications

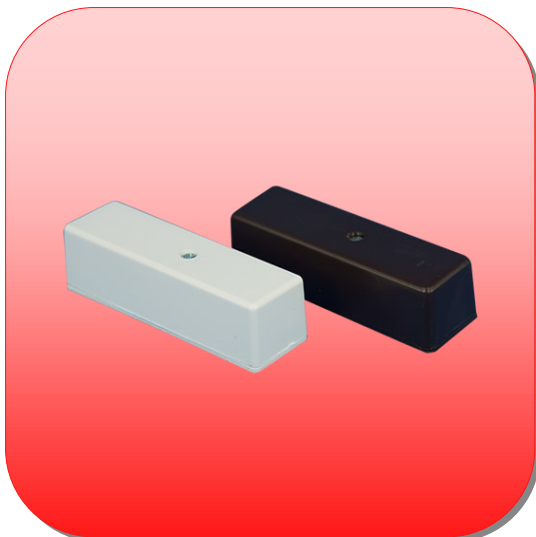
Specification	Grade 2 Class II
	Roller Shutter Contact
	Potted - Single Reed
Operating Gap	50mm (approx)
Dimensions	150mm x 40mm x 15mm
Materials	Aluminium, 18" Armoured Sleeving
Magnet	Ferrite or Alnico V
Contact Material	Rhodium
Voltage Range	1 – 100v DC, 125v AC Max
Switching Current	500mA Max DC, 500mA Max AC
Temperature Range	-40°C to +50°C

Heavy Duty Surface Contacts

Order Code
LY97-007-80

Features; 6-Terminal Single Reed Large Surface Contact, Colour: White, Environmental Class II, Operation Gap: 40mm Approx, Dimensions: 86mm x 25mm x 20mm, Terminals: 6-Screw, Tamper: Leaf.

Technical Specifications

Specification	Grade 2 Class II
	Industrial Contact 6 Terminal
	Single Reed
Operating Gap	40mm (approx)
Dimensions	86mm x 25mm x 20mm
Materials	High Impact Polystyrene
Magnet	Ferrite or Alnico V
Contact Material	Rhodium
Voltage Range	1 – 100v DC, 125v AC Max
Switching Current	500mA Max DC, 500mA Max AC
Temperature Range	-40°C to +50°C

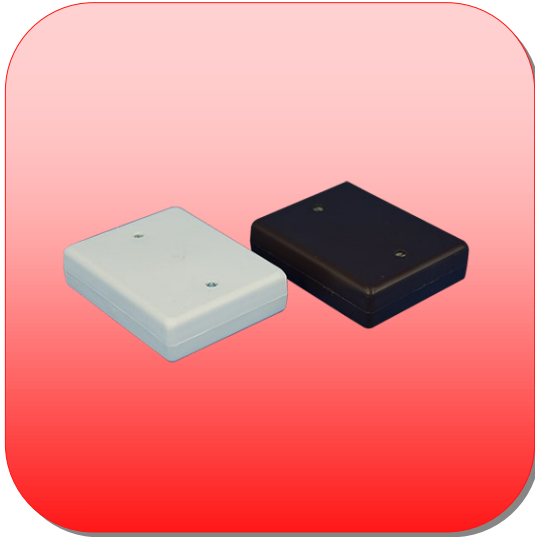
7 Way Junction Box

Order Code

LY97-008-81	White
LY97-030-79	Brown

Features: Environmental Class 2, Material: HIPS, Colour: White / Brown, Terminals : 5 + 2, Temp Range: -40°C to +50°C, Tamper: Leaf, Dimensions: 78 x 24 x 22mm, Access: 2 End Knock-outs 2 Back Holes.

Technical Specifications

Specification	Grade 2
	Junction Boxes
Materials	Box – HIPS, Cover - HIPS, Mineral Filled Polyprop (J60)
Tampers	Stainless Steel
Dimensions	78 x 24 x 22mm
Maximum Current	3A Max AC
Rated Voltage	0-125v DC, 230v AC
Colours	White / Brown (Suffix B)
Variations	Reed (Suffix R), Empty (Suffix E)
Fittings	Wire Clamping Terminals
Temperature Range	-40°C to +50°C

9 Way Junction Box

Order Code

LY97-031-80	White
LY97-032-81	Brown

Features; Environmental Class 2, Material: HIPS, Colour: White / Brown, Terminals : 8 + 2, Temp Range: -40°C to +50°C, Tamper: Leaf, Dimensions: 70 x 56 x 20mm, Access: 8 End Knock-outs 4 Back Holes.

Technical Specifications

Specification	Grade 2
	Junction Boxes
Materials	Box – HIPS, Cover - HIPS, Mineral Filled Polyprop (J60)
Tampers	Stainless Steel
Dimensions	70 x 56 x 20mm
Maximum Current	3A Max AC
Rated Voltage	0-125v DC, 230v AC
Colours	White / Brown (Suffix B)
Variations	Reed (Suffix R), Empty (Suffix E)
Fittings	Wire Clamping Terminals
Temperature Range	-40°C to +50°C

Plastic Panic Buttons Single Push White Latched

Order Code

LY97-004-77

Features: Single Push Panic Button, Dimensions: 91mm x 63.5mm x 29mm, Environmental Class: 2, Latching, Material: White ABS, Tamper: Leaf.

Technical Specifications

Specification	Grade 1 Class II
	Single End Push Panic Button
Materials	ABS / Acetal
Tampers	Stainless Steel, Metal Key Provided inside
Dimensions	78 x 24 x 22mm
Switching Current	500mA Max DC, 500mA Max AC
Contact Material	Rhodium
Indicator	Flag Type
Voltage Range	1 – 100v DC, 125v AC Max
Colours	Plastic - White (No Suffix), Plastic - Black (Suffix B)
Finishes	Plastic
Temperature Range	-40°C to +50°C

Stainless Steel Panic Button

Order Code
LY97-005-78

Features; Single Push Panic Button, Dimensions: 91mm x 63.5mm x 29.mm, Environmental Class: 2, Latching, Material: White ABS, Tamper: Leaf.

Technical Specifications

Specification	Grade 1 Class II
	Single End Push Panic Button
Materials	ABS / Acetal
Tampers	Stainless Steel, Metal Key Provided inside
Dimensions	91mm x 63.5mm x 29.mm
Switching Current	500mA Max DC, 500mA Max AC
Contact Material	Rhodium
Indicator	Flag Type
Voltage Range	1 – 100v DC, 125v AC Max
Colours	Plastic - White (No Suffix), Plastic - Black (Suffix B)
Finishes	Stainless Steel
Temperature Range	-40°C to +50°C