

K6600 LCD Keypad Installation Instructions

Description

The K6600 LCD keypads can be connected to both the ST6100 & ST6600 control panel. Up to a maximum of 6 Keypads can be connected to anyone control panel. The keypad features, 32 segment LCD display, back light illumination, power, system status and omit LED indication, onboard personal alarm (press: SET, OMIT, SET).

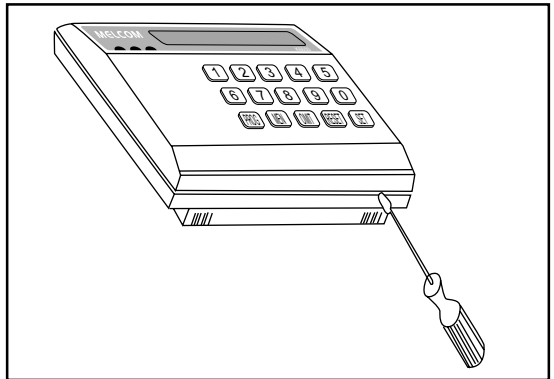
Installation instructions:

Handling the keypad

- Make sure your hands are clean
- Handle keypad carefully the LCD display is fragile
- Do not use unnecessary force when opening and closing the plastic case
- Peel off the protection film covering the LCD display
- Set the addressable configuration jumpers
- Install the keypad close to your entry/exit point of the building, it should be positioned out of reach of children.

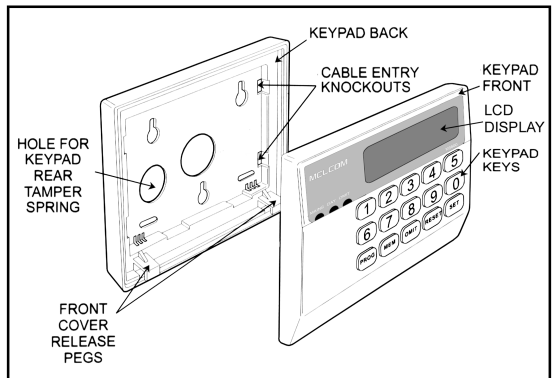
Opening the keypad

To remove the front cover, insert a flat headed screwdriver to release the pegs located at the bottom of the keypad.



Mounting onto wall

Using the rear keypad plastic case as a template, mark the positions of the mounting holes. The mounting surface must be solid, do not mount onto a flammable or uneven surface. Drill mounting holes and fit wall plugs, before drilling make sure you wear safety goggles and check for hidden cable and pipes.



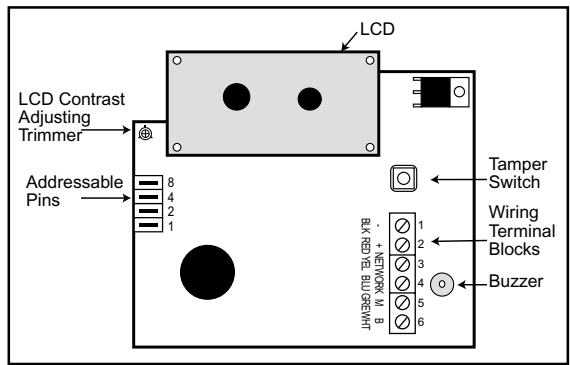
MELCOM

Contrast Adjustment

The LCD display screen contrast can be adjusted by turning the trimmer using a small screw driver

Configuring Address Setting

Each keypad or accessory must have a unique address when connected to the control panel bus. If invalid address set, keypads will not work



Address Table

1	2	3	4	5	6	7	8	9	10	11	12	13	14	15
008	008	008	008	008	008	008	■8	■8	■8	■8	■8	■8	■8	■8
004	004	004	■4	■4	■4	■4	004	004	004	004	■4	■4	■4	■4
002	■2	■2	002	002	■2	■2	002	002	■2	■2	002	002	■2	■2
■1	001	■1	001	■1	001	■1	001	■1	001	■1	001	■1	001	■1

Wiring Terminal Block

Thread 6 core cable through one of the cable knockouts in the rear plastic casing.

Wire according to the opposite table.

No.	Location	Wire Colour	Description
1	-	BLK(Black)	Negative
2	+	RED(Red)	12 Volts Positive
3	Network	YEL(Yellow)	Data Out
4	Network	BLU(Blue)	Data in
5	M	GRE(Green)	Mains Indication
6	B	WHT(White)	Battery Indication

Closing Keypad Casing

To fit the front cover, align the bottom pegs with their concentric slots, and clip the top onto the base, make sure all sides are securely closed.

Specifications

Operating Voltage: 12Vdc

Quiescent Current: LCD Backlight Off 16.7mA

Current: LCD Backlight Off 90mA

Current: in Alarm 70mA

Wiring: 6 core Multi-stranded cable
7x0.20m²

Dimensions: 135mmx108mmx80mm

Housing Material: ABS Plastic

Weight: 0.30Kg

Operation

Refer to the ST6100/ST6600 installation and user manual